

1

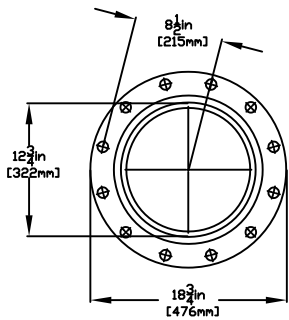
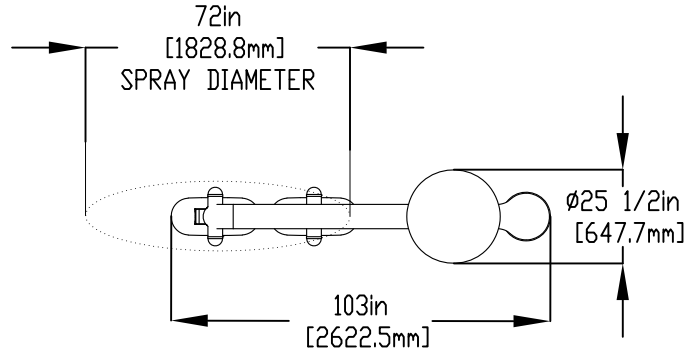
2

3

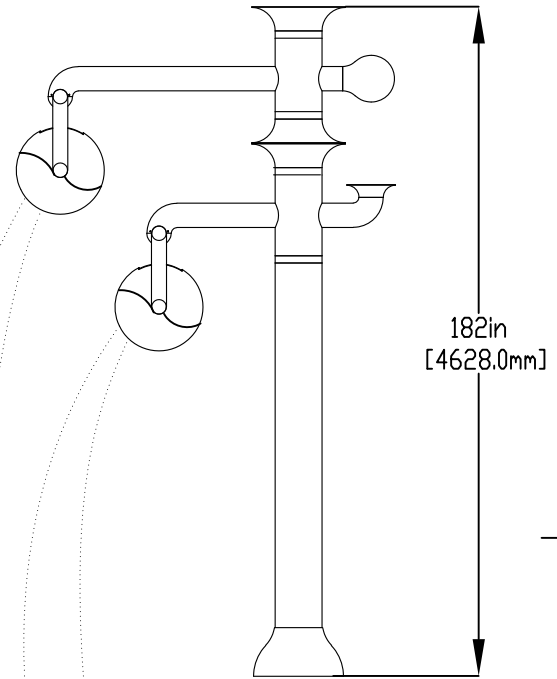
4

NOTES:

- (1) PURGE ALL WATER SUPPLY LINES TO REMOVE SOLIDS PRIOR TO TOY INSTALLATION.
- (2) PROVIDE ELECTRICAL BOND WITH POOL REBAR.
- (3) INSTALL ALL WATER TOYS PLUMB AND LEVEL.
- (4) PROVIDE STRAINER UPSTREAM OF TOY WITH MAX 1/32" (0.8mm) PERFORATIONS.



FLANGE DETAIL



- 1" (25mm) FLEX HOSE PROVIDED BY EMPEX
- 2" (50mm) COUPLING
- 2" (50mm) TO 1" (25mm) REDUCER
- 1" (25mm) HOSE BARB W/SS CLAMP TO BE PROVIDED BY CONTRACTOR

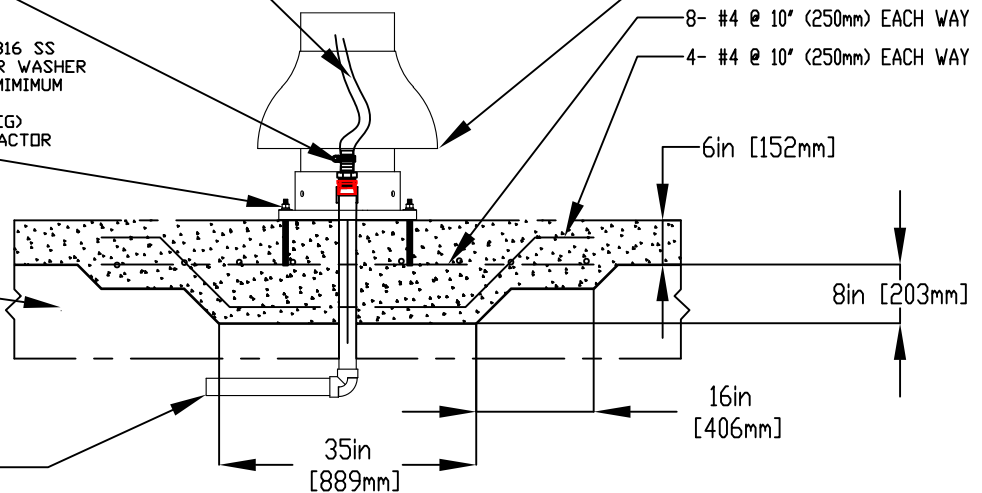
LOWER FLANGE COVERS AFTER TOY IS INSTALLED

- 5/8" (16mm) X 9" (229mm) 316 SS THREADED ROD, C/W FENDER WASHER LOCK WASHER & NUT (X6) MINIMUM 6" EMBEDMENT, EPOXY SET ANCHOR ADHESIVE (EACH LEG) TO BE PROVIDED BY CONTRACTOR

- 8- #4 @ 10" (250mm) EACH WAY
- 4- #4 @ 10" (250mm) EACH WAY

GRANULAR BASE

2" (50mm) PVC SCH 40 WATERFEED TO BE EXTENDED 8" (200mm) ABOVE SLAB.



Notes: Overall dimensions of toys are approximate.

© EMPEX WATERTOYS



WATER SUPPLY
30 gpm @ 25 psi
1.89L/S @17.5m

AQUADUO

T643

31/07/2024

SCALE:

Sheet 1 of 1

1

2

3

4