

1

2

3

4

NOTES:

- (1) PURGE ALL WATER SUPPLY LINES TO REMOVE SOLIDS PRIOR TO TOY INSTALLATION.
- (2) PROVIDE ELECTRICAL BOND WITH POOL REBAR.
- (3) INSTALL ALL WATER TOYS PLUMB AND LEVEL.
- (4) PROVIDE STRAINER UPSTREAM OF TOY WITH MAX 1/32" (0.8mm) PERFORATIONS.

A

B

C

D

E

F

A

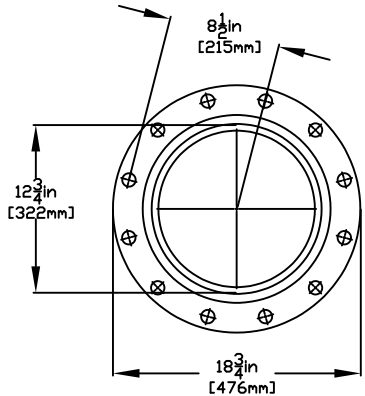
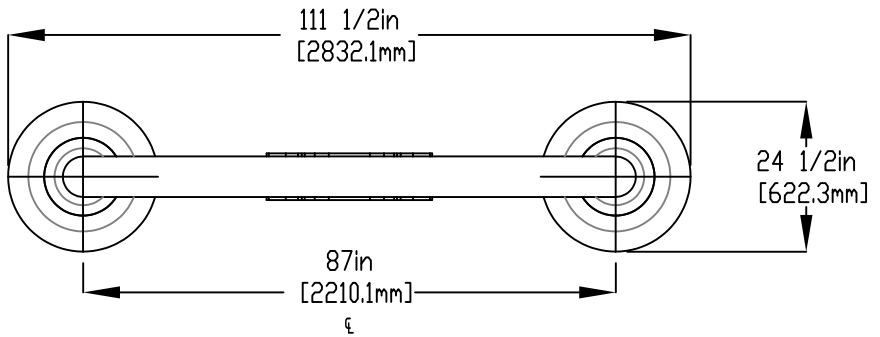
B

C

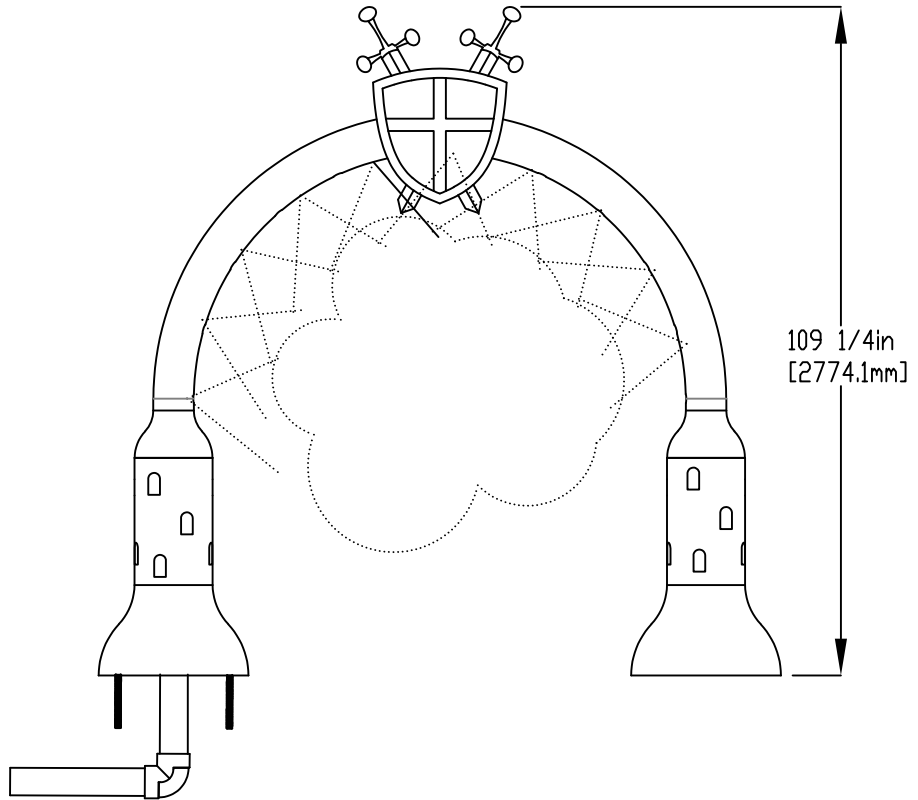
D

E

F



FLANGE DETAIL

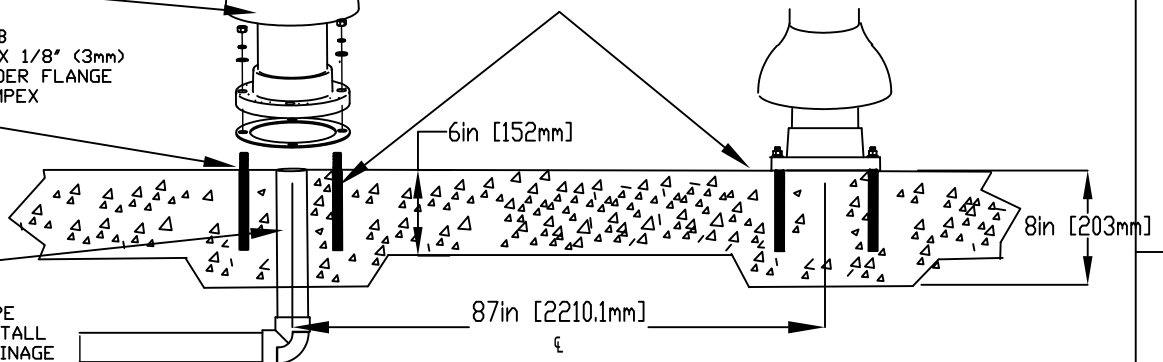


LOWER FLANGE COVERS AFTER TOY IS INSTALLED

FLOODED COLUMN ENSURE LEVEL & PLUMB 4" (101mm) (6" 152mm) X 1/8" (3mm) GASKET, INSTALLED UNDER FLANGE TO BE PROVIDED BY EMPEX

1/2" (13mm) X 8" (203mm) 316SS THREADED ROD, C/W FENDER WASHER, LOCK WASHER & NUT (X6) MINIMUM 6" (152mm) EMBEDMENT, EPOXY SET ANCHOR ADHESIVE TO BE PROVIDED BY CONTRACTOR

WATERFEED 2" (50MM) PVC SCH40 PIPE CUT CLOSE PRIOR TO INSTALL TO ALLOW FOR FULL DRAINAGE



Notes: Overall dimensions of toys are approximate. Approximate Weight: 264lbs / 120kgs

© EMPEX WATERTOYS



WATER SUPPLY  
35 gpm @ 25 psi  
2.21L/S @17.5m

AQUABOW CASTLE

AC811

01/05/2020

SCALE:

Sheet  
1 of 1

1

2

3

4